

Piccolo & Flute

Ju te vuex

Erik Satie
Arr for Orchestra

♩ = 180

Intro.

2nd & 3rd *mf* 1st *mp*

The Intro section consists of five measures. The top staff (Piccolo) has whole rests. The bottom staff (Flute) has whole rests in measures 1-3. In measure 4, the Flute plays a half note chord of G4 and B4. In measure 5, the Flute plays a half note chord of G4 and B4, with a first finger trill on G4.

A

Section A consists of six measures. The top staff (Piccolo) has whole rests. The bottom staff (Flute) plays a half note chord of G4 and B4 in measure 6, followed by a half note chord of G4 and B4 in measure 7, a half note chord of G4 and B4 in measure 8, a half note chord of G4 and B4 in measure 9, a half note chord of G4 and B4 in measure 10, and a half note chord of G4 and B4 in measure 11.

12

Measures 12-16. The top staff (Piccolo) has whole rests. The bottom staff (Flute) plays a half note chord of G4 and B4 in measure 12, followed by a half note chord of G4 and B4 in measure 13, a half note chord of G4 and B4 in measure 14, a half note chord of G4 and B4 in measure 15, and a half note chord of G4 and B4 in measure 16.

17

Measures 17-21. The top staff (Piccolo) has whole rests. The bottom staff (Flute) plays a half note chord of G4 and B4 in measure 17, followed by a half note chord of G4 and B4 in measure 18, a half note chord of G4 and B4 in measure 19, a half note chord of G4 and B4 in measure 20, and a half note chord of G4 and B4 in measure 21.

22

24

Measures 22-25. The top staff (Piccolo) has whole rests. The bottom staff (Flute) plays a half note chord of G4 and B4 in measure 22, followed by a half note chord of G4 and B4 in measure 23, a half note chord of G4 and B4 in measure 24, and a half note chord of G4 and B4 in measure 25.

26

Measures 26-29. The top staff (Piccolo) has whole rests. The bottom staff (Flute) plays a half note chord of G4 and B4 in measure 26, followed by a half note chord of G4 and B4 in measure 27, a half note chord of G4 and B4 in measure 28, and a half note chord of G4 and B4 in measure 29.

Ju te vuex

30

B

35

mf 2nd 3rd

40

45

mf *tr*

50

1st 2nd

55

60

p *tr*

Ju te vuex

65

C

mp

75

80

85

88

1 & 3.

f 2nd

89

93

Ju te vuex

D

98

f

103

f

107

f

111

f

115

Fine

119

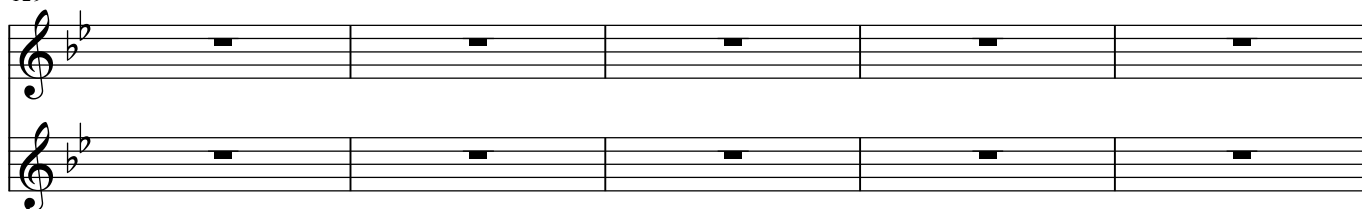
mf

124

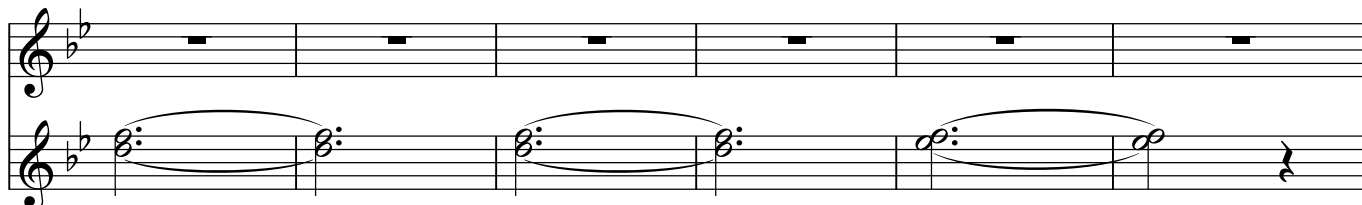
mf

Ju te vuex

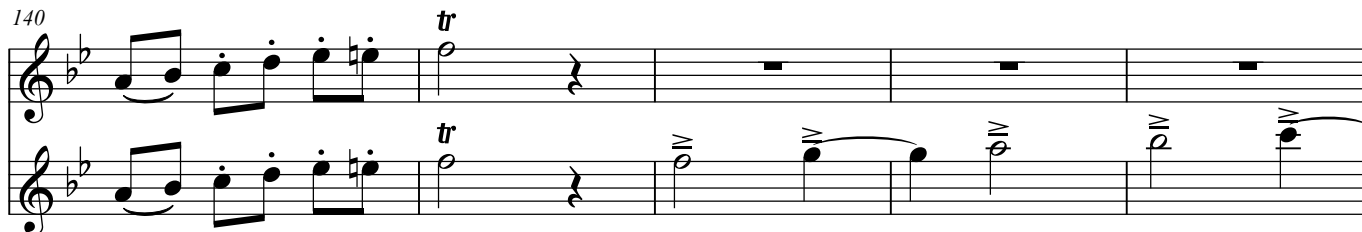
129



134



140



145

